



KARIEGA
FOUNDATION
CONSERVATION THROUGH COMMUNITY

INTEGRATED REPORT
Year ending February 2024



Non-Profit Trust

IT 189/10 - NPO 153-878 - PBO 93005451

Working in
partnership
with

KARIEGA

GAME RESERVE

Eastern Cape · South Africa





Contents

	Page
Message from the Chairman	4
Message from the CEO	5
Our Milestones	6
Vision, Mission, Core Objectives	7
Our Philosophy	11
2023 at a glance	13
Board of Trustees	14
Project highlights	15
Financials	32
Donors	39
Stay Connected	42



Message from Chairman

Last year, I made the choice to slow down and move to the beautiful Eastern Cape, where I am now surrounded by a rich, biodiverse environment, that serves as a daily reminder of why we made the move. With each sunrise, sunset, cycle, walk, paddle, swim in the sea, or simple drive to visit a community project, I think "WOW", we are surrounded by such beauty.

I feel privileged to be the Chair of the Kariega Foundation and a part of many conservation initiatives, community projects, and the strategic planning behind our significant growth and impact on the landscape and communities of this Lower-Albany district.

The question I now ask is, "Why should each of us do something to contribute to the protection of this unbelievably biodiverse province so that all current and future generations may benefit from it for eternity?"

The answer is quite simple. All parts of our local and global ecosystem are interconnected. If we don't play our own small part in trying to restore our local equilibrium, of an already way out of balance global environment, we become a part of the accelerated collapse of all ecosystems, one small microsystem at a time.

So, what part are you playing?

At the Kariega Foundation we strive to create and implement sustainable, replicable and scalable project models to promote and support the protection of biodiversity and endangered species, habitat and wildlife conservation and community upliftment.

By supporting the Kariega Foundation you can play your part and make a difference. We invite you to come on board, and be a part of our solution.

Each step we take towards improving our environment may seem small, but in the bigger picture they add up and make a great impact on our planet. Some people are unaware that their actions have a huge, negative impact on our natural surroundings. Through education we can grow awareness, learn from our mistakes and do better at finding ways to create a healthier environment with happier people who enjoy a significantly improved standard of living.

We need to stop telling ourselves that the next generation will fix our problems. We need to combine our various strengths and diverse characteristics to move forward, positively and sustainably, into the future.

We are all the change and can make a difference no matter how small it may seem. This is conservation through community.

By helping us, you can be part of the solution and secure a better future for all generations to come.

Antony Wannell





Message from the CEO

The Kariega Foundation has grown exponentially over the past seven years.

Starting with a staff component of three in 2017, the team has grown to 33 employees, with only 15% fulfilling management and administrative roles, and 85% employed within numerous conservation and community projects.

A significant increase in funding has facilitated this growth, with total funds raised in the 2023/24 financial year surpassing R9 Million – a 25% increase on 2022/23.

This growth can be attributed to these key factors:

- We have cultivated a trusting relationship with our beneficiary communities based on mutual respect and collaboration. This has opened the door to initiating and growing our core projects.
- We are privileged to work in partnership with Kariega Game Reserve. This robust and values-driven tourism company drives sustainable donations for the Foundation via the conservation and community levy donated by all guests. With the return of tourism (post-Covid19) Kariega Game Reserve was the Foundation's largest funder, contributing just over 50% to our 2023 donation revenue.
- We have developed meaningful relationships and collaborative fundraising models with several key organisations with like-minded community and conservation objectives. These partnerships have grown our fundraising capacity significantly.

Select administrative costs are covered by Kariega Game Reserve, enabling the Kariega Foundation to cap admin and management costs at 12% of donation revenue and invest the balance directly into project costs.

Thank you to the amazing people from the communities of Ekuphumleni, Marselle, Klipfontein and Alexandria. The leadership, talent and growing sense of ubuntu within these communities, as well as their vision for what is possible, drives our progress.

We are stepping into 2024/25 to write our next chapter with energy and passion and to build on the solid accomplishments of 2023/24.

Thank you to the Kariega Foundation Team and Trustees; Kariega Game Reserve and every single person and organisation who has supported us. We are co-creating something profound!

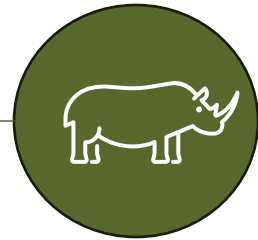
Lindy Sutherland



Our Milestones



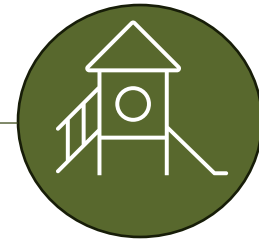
2009
Kariega Foundation registered as a Trust



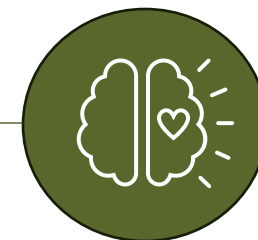
2012
Save The Rhino launched



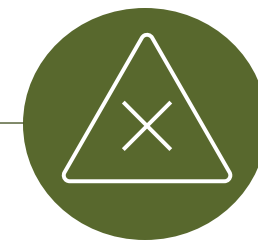
2017
Conservation and community levy donation applied



2018
ECD Level 4 training completed, and curriculum resources supplied



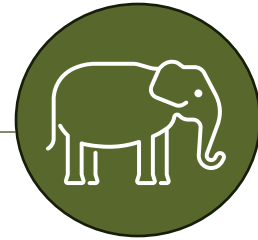
2019
Social and Emotional Learning training completed by staff



2019
1st Community APU Training Course concluded



2022
Ubuntu Cup Sports League launched



2021
Additional habitat for elephant, lion and cheetah



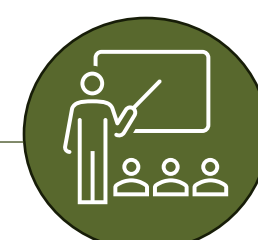
2021
25km of Bushmans River protected



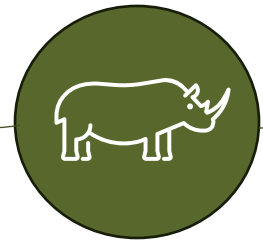
2021
Land donation received. Protected area grows to 11,500 hectares



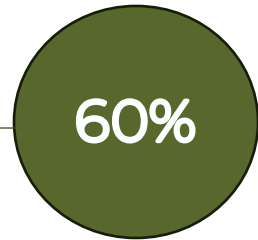
2020
SOIL Permaculture Project launched



2020
Partnership with two Primary Schools on SEL



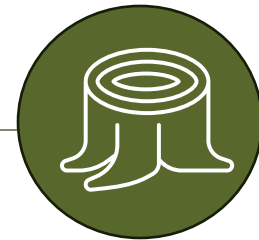
2023
Partnership with WWF as black rhino custodians



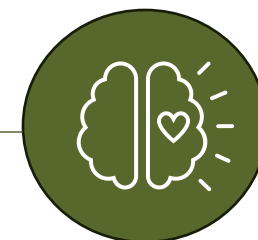
2023
4th Community APU Training concluded – 60% of APU team from local community



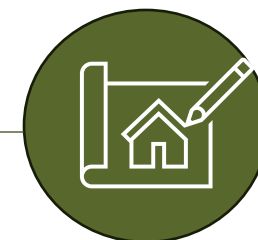
2023
Ekuphumleni Library Computer Hub opened with 16 laptops



2023
Community Alien Plant Control Training completed



2023
SEL Regional Training facilitated



2023
Special Needs Education Project launched



KARIEGA
FOUNDATION
CONSERVATION THROUGH COMMUNITY

Vision and Mission

Biodiversity Hotspots

We work in the Eastern Cape of South Africa at the convergence point of two, out of 36 global, biodiversity hotspots, where the Cape Floristic Kingdom meets the Mputuland, Pondoland, Albany biosphere.

These biodiversity hotspots comprise only 2.5% of the Earth's surface, but are home to almost half the world's endemic bird, mammal, reptile and amphibian species.

A biodiversity hotspot must support at least 1500 endemic plants, with less than 30% of the original vegetation currently protected.

Biodiversity hotspots are irreplaceable, critical to our survival and currently threatened.

The global target is to have at least 30% of habitat in biodiverse hotspots protected and under conservation management by 2030.





Vision and Mission

To be a united and conservation-minded community, working together to protect, preserve, and benefit our planet, people, and wildlife.

We create and implement sustainable, replicable and scalable project models to promote and support:



Protection of
biodiversity



Protection of
endangered
species



Habitat and
wildlife
conservation



Community
upliftment



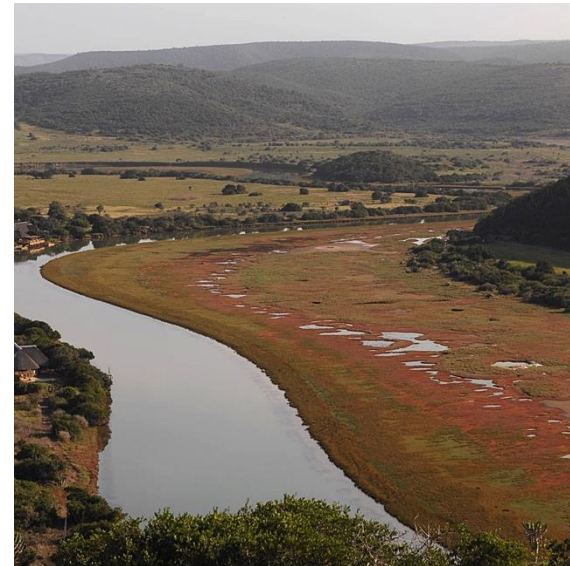
Core Objectives



BIODIVERSITY

The protection of biodiversity through habitat expansion.

Key focus area is the identification, sustainability modelling, and acquisition of critical and biodiverse land to incorporate into the protected area.



PROTECTION

The protection of endangered species through the development of advanced technology surveillance systems and the management of a professional Anti-Poaching-Unit.

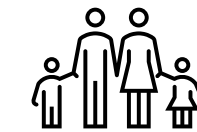
Key focus area on community skills development for job creation within wildlife protection.



CONSERVATION

Development and implementation of Habitat and Wildlife Management Plans to ensure legal compliance and the highest research-driven conservation practices.

Key focus area on community skills development for job creation and enterprise development within ecological services.



COMMUNITY

Creating programmes and projects to sustainably and consistently uplift neighbouring communities.

Key focus area on empowerment and capacitation of youth through Social and Emotional Learning, to harness skills and enterprise development opportunities for job creation.

Our Philosophy

Conservation Through Community

We believe that the sustainable protection of biodiverse landscapes can only be achieved when land use through eco-tourism (or other means) generates additional and sustainable revenue to fund research-driven conservation practices with tangible benefits and opportunities flowing to the communities that live in and around the protected area. This results in communities joining conservation efforts with a common will to preserve the protected area forever.





“

“Kariega Game Reserve is close to our communities. We have Big 5 and animals, especially rhinos that are endangered. We have programmes that teach the children so that they can also educate their parents that we need to take care of these animals because they are so special.

Now, the community at large is more aware that the environment is very, very important. And when we take care of the environment and the animals, they take care of us.

This is conservation through community.”

Nomawethu Ngangu
Kariega Foundation Community Manager

2023 at a Glance : Key Achievements

Conservation through community in action



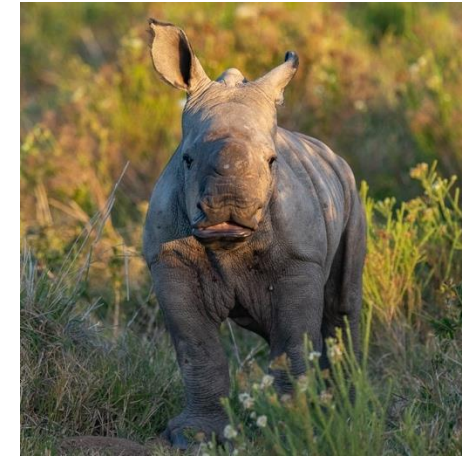
R9 MILLION
INVESTED



3000 community
beneficiaries



1000 learners
receiving weekly
SEL



ZERO
RHINO
POACHED
SINCE 2012



310 Players in
Ubuntu Cup



1 x
Computer
hub -16
laptops



60% APU
from local
communities

41 Skills
Development
learnerships
awarded



Cheetah
Introduced



WWF Black
Rhino
Custodians

11,500
HECTARES OF
BIODIVERSITY
PROTECTED



Trustees



Antony Wannell
CHAIRMAN and TRUSTEE

Passionate conservationist and experienced entrepreneur with a drive to make a difference in the Eastern Cape. Career highlights include:

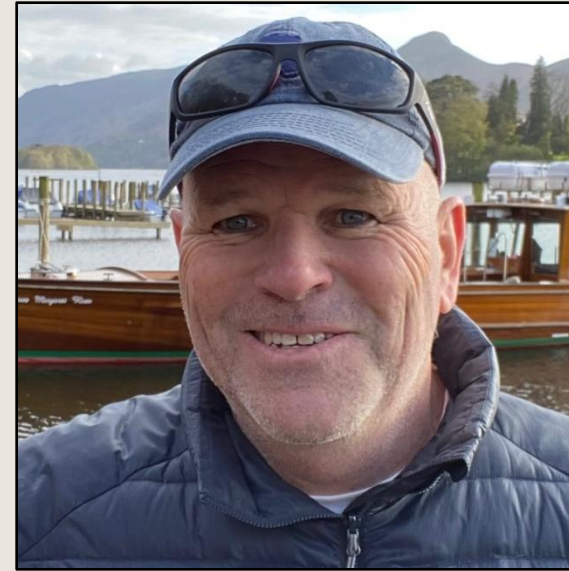
- 20 years as a board member of the Endangered Wildlife Trust, including serving as deputy chairman.
- 27 years building an entrepreneurial trading business.
- Management of a property portfolio focused on student accommodation.



Lindy Sutherland
CEO and TRUSTEE

Family owner in Kariega Game Reserve, with a deep love for nature and people. She is particularly driven to achieve the sustainable upliftment of communities through the holistic investment in youth. Her career highlights include:

- Co-authoring the COOL TO BE ME, SEL curriculum.
- Developing the SACE accredited SEL CPTD course.
- Co-authoring The Coolplay Way – coaching with SEL.
- SEL training and mentorship.



Graeme Rushmere
TRUSTEE

Family owner in Kariega Game Reserve with a background in commercial law, business management, property, retail, leisure travel, hospitality and wildlife conservancies. He is passionate about the Eastern Cape – the landscape, people and wildlife. His career highlights include:

- Founding partner, Harty Rushmere Law.
- PEG Retail Group – Executive and consultant.
- Co-CEO and Chairman of the Kariega Group.
- Trustee of the Kariega Foundation since its inception in 2009.



Manuel Koser
TRUSTEE

A seasoned entrepreneur and business leader in e-commerce, technology, and venture capital. Career highlights include:

- Co-founded and MD of Silvertree Brands.
- Co-founder and CEO of Zando in South Africa and Jumia in Nigeria.
- Non-executive director at FIN, (a credit, savings, and insurance provider) and several tech and venture-backed startups, including Ozow and Old Mutual's corporate venture capital fund, Next176.



Imraan Soomra
TRUSTEE

An ethics-driven leader driving stakeholder value by shifting from traditional capitalism to profit with purpose. Career highlights include:

- CEO of EASE Holdings.
- CEO at Global Fishing.
- 30 years of extensive experience across diverse industries at senior executive level.

Imraan resonates with organisations and individuals focused on addressing socio-economic, race, gender and religious imbalances.



KARIEGA
FOUNDATION
CONSERVATION THROUGH COMMUNITY

Project Highlights

Biodiversity

Habitat expansion

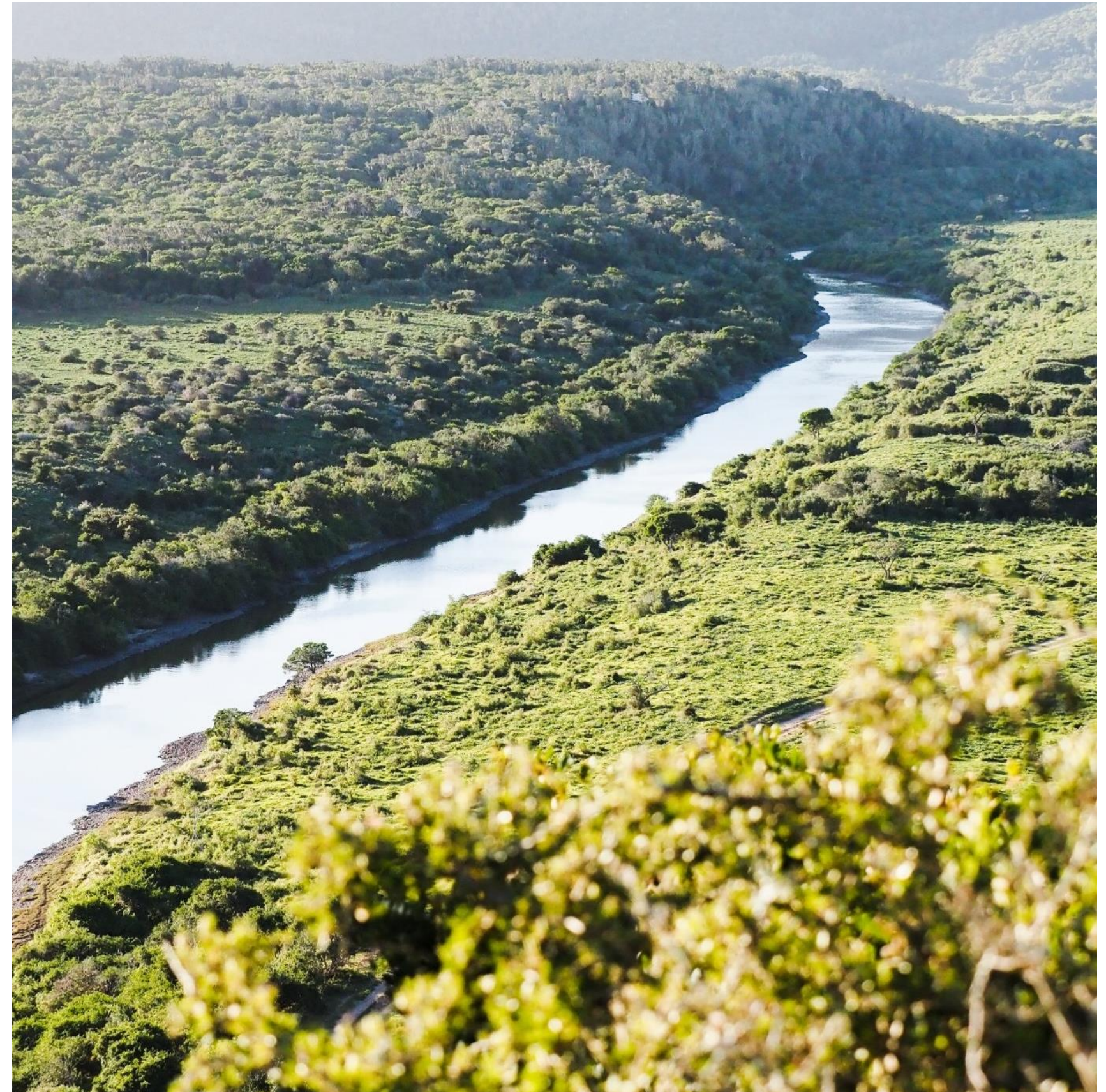
A long-standing vision was actualised this year, when an additional 1,500 hectares of biodiverse habitat in the Bushmans River Valley was acquired as a donation and incorporated into the Kariega Game Reserve protected area, which now spans 11,500 hectares.

Conservation benefits include:

- An additional 1,500 hectares of biodiverse habitat under conservation management.
- 25 km of Bushmans River estuary protected and under conservation management.
- Additional habitat to support white rhino breeding.
- Introduction of cheetah in partnership with Ashia Cheetah Conservation and EWT (Endangered Wildlife Trust).
- Additional habitat for elephant, lion, and brown hyena.
- Custodianship of South African government black rhino, in partnership with the WWF Black Rhino Range Expansion Programme (BRREP). It is the first time black rhino have been back in the Bushmans River Valley since 1850.

Protection of Endangered Species – Rhino

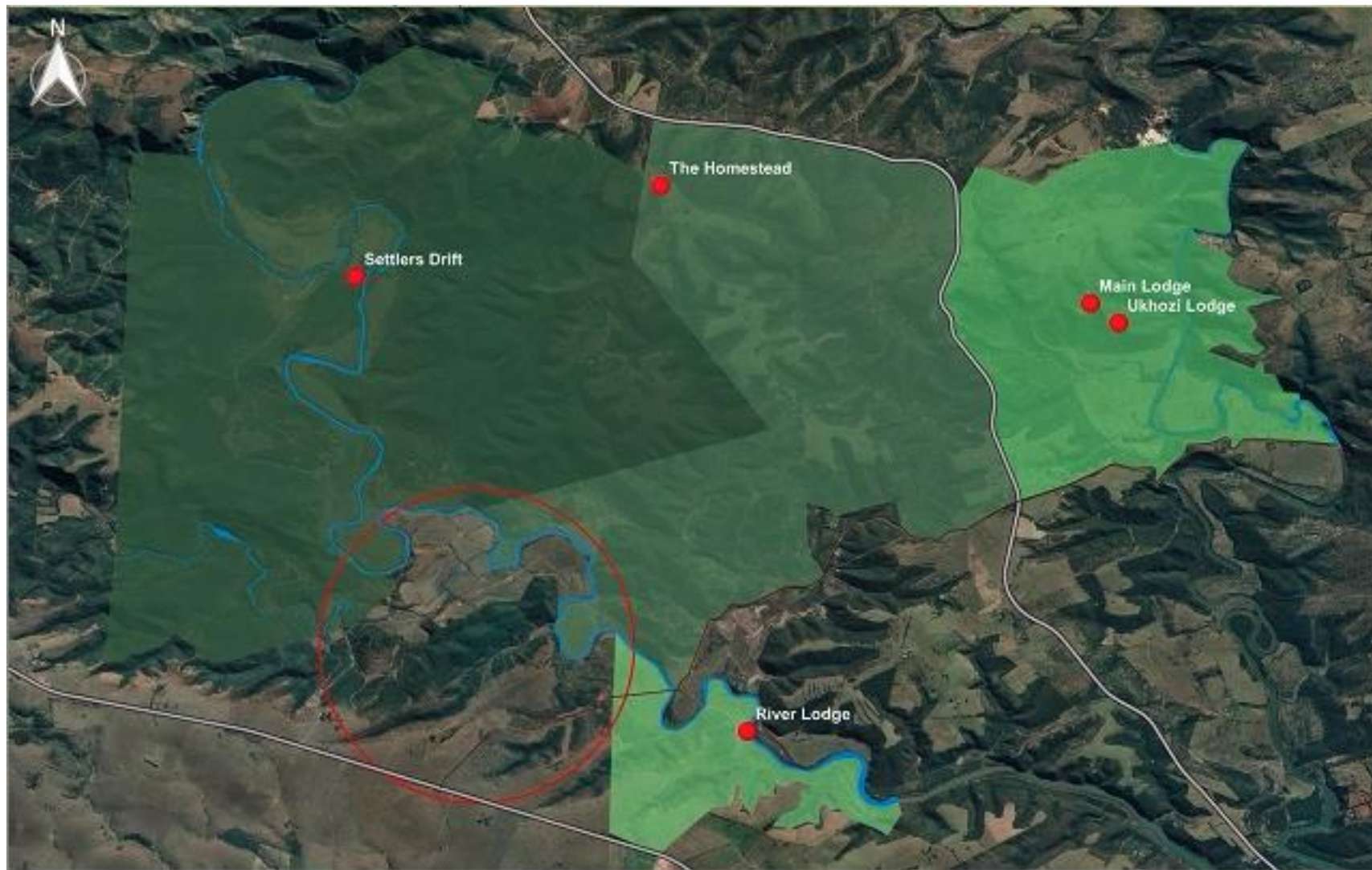
- Zero rhino poached since 2012.
- 60% of the APU team are from communities surrounding Kariega Game Reserve.
- Two additional K9's acquired and two APU rangers identified to complete K9, DH training.
- APU boat acquired for regular patrols on the Bushmans River.
- Significant progress achieved in surveillance and advanced technologies.



Bushmans River Valley Habitat Expansion

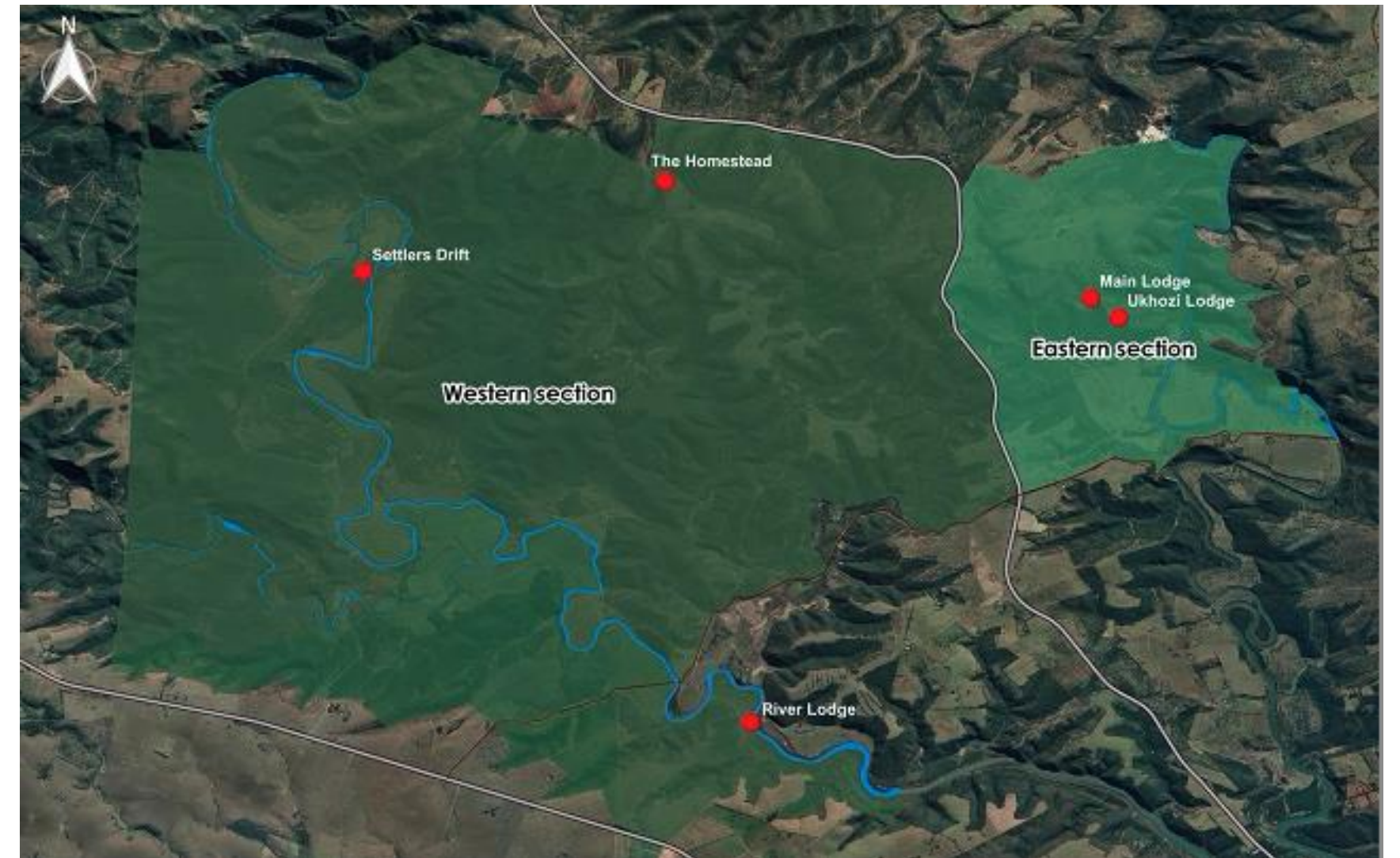
Map of Kariega Game Reserve pre habitat expansion.

Note: The western section of the reserve is divided by two fence lines into three separate sections. The newly donated habitat is circled in red.



Map of Kariega Game Reserve post habitat expansion.

Note: The western section of the reserve is now one large landscape free of all internal fences.



Conservation

Alien Plant Control

As recently as 33 years ago, the 11,500 hectare, protected area was owned by 21 different farmers who used the land to grow crops and raise livestock, displacing most of the wildlife and introducing many alien plant species.

Restoring the land back to its original state, free from the infrastructures of farming and free of alien plants is an ongoing and intensive process. This year we introduced Alien Plant Control as an enterprise development opportunity for our local communities.

Five youth were selected and trained in:

- Alien plant identification
- Certified chainsaw operator qualification
- Basic herbicide training

This Alien Plant Control team is now working on the reserve, focusing on:

- Invasive plant mapping
- Removal of prickly pear, wattle, pine, blue gum, red-eye and port Jackson
- Debris removal (old poles and old farming structures)
- Fence removals

The vision for this project is to continue to grow local skills and knowledge, and capacitate community members with the entrepreneurial skills to create viable business models around Alien Plant Control.



Conservation

Current Research Projects

In addition to delivering on a busy annual, ecology calendar across wildlife and habitat management, our ecology team also facilitates the following research projects in collaboration with numerous partner organisations and academic institutions:

- Social dynamics and animal health – Elephant Reintegration Trust (ERT).
- Effects of landscape expansion on group associations, spatial utilisation & stress hormones - Bring The Elephants Home (BTEH).
- Black and White rhino monitoring focused on habitat selection, associations, habits, conditions, population dynamics, breakout and poaching risk.
- Lion monitoring focused on prey preferences, habitat selection, associations, population dynamics and breakout risk.
- Cheetah monitoring focused on prey preferences, habitat selection, interactions, population dynamics and breakout risk.
- Leopard research in partnership with NMU and other INDALO reserves on a PhD leopard study to help determine the region's population dynamics, range use and prey selection using camera trapping data.



Protected Species

We work with two endangered species lists:

1. Internationally: The Red Data List under the International Union for Conservation of Nature (IUCN).
2. Locally: The Threatened or Protected Species List (TOPS) under the National Environment Management Biodiversity Act (NEMBA-Act 10 of 2004).

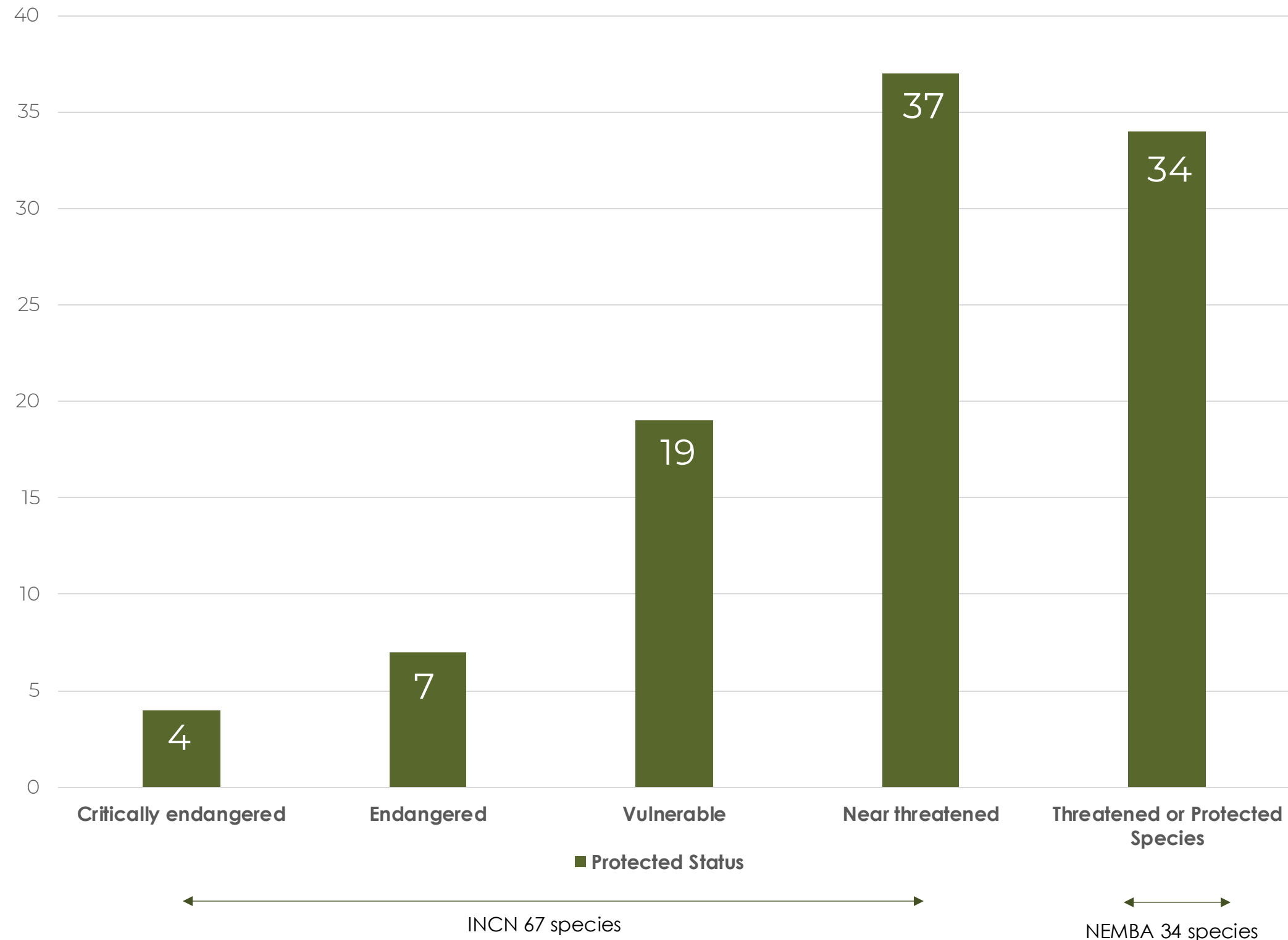
The total number of species currently listed on Kariega Game Reserve is 1250 of which 75 are under some form of protection, with 27 species listed under both the RED DATA LIST and TOPS, while a further 8 species are listed only on TOPS and 41 species listed only on the RED DATA LIST.

Total Species Breakdown

The table gives a breakdown of the total species richness, by life form groups, present and assessed to date on Kariega Game Reserve and the number of species in each category with some level of protection under the IUCN and NEMBA, respectively.

Species Group	Number of recorded species	IUCN-Red List	NEMBA-TOPS
Mammals	109	20	16
Birds	334	23	8
Fish	57	7	0
Reptiles	64	21	2
Amphibians	15	0	0
Invertebrates	Not yet determined	2	0
Plants	671	14	8
Total	1250	57	34

Species by Protection Status



Critically Endangered Species

- Black Rhino
- White backed Vulture
- Esturine Pipefish
- Hottentots boegoe

Endangered Species

- Mountain reedbuck
- Martial Eagle
- Dusky Cob
- White Steenbras
- Albany Adder
- Inquieta Spiny-backed Spider
- Cape Dwarf Eelgrass

Note: The white rhinoceros is currently listed as near threatened. However, they are currently the most targeted animal by poachers and at risk of quickly moving up the list to endangered.

Community

Education

SOCIAL AND EMOTIONAL LEARNING

- 1000 learners received weekly SEL tuition in partnership with Ekuphumleni Primary and Nompucuko Primary.
- The CoolPlay Way (coaching with SEL) was taught to all youth registered in our afterschool's sports programme.

EARLY CHILDHOOD DEVELOPMENT

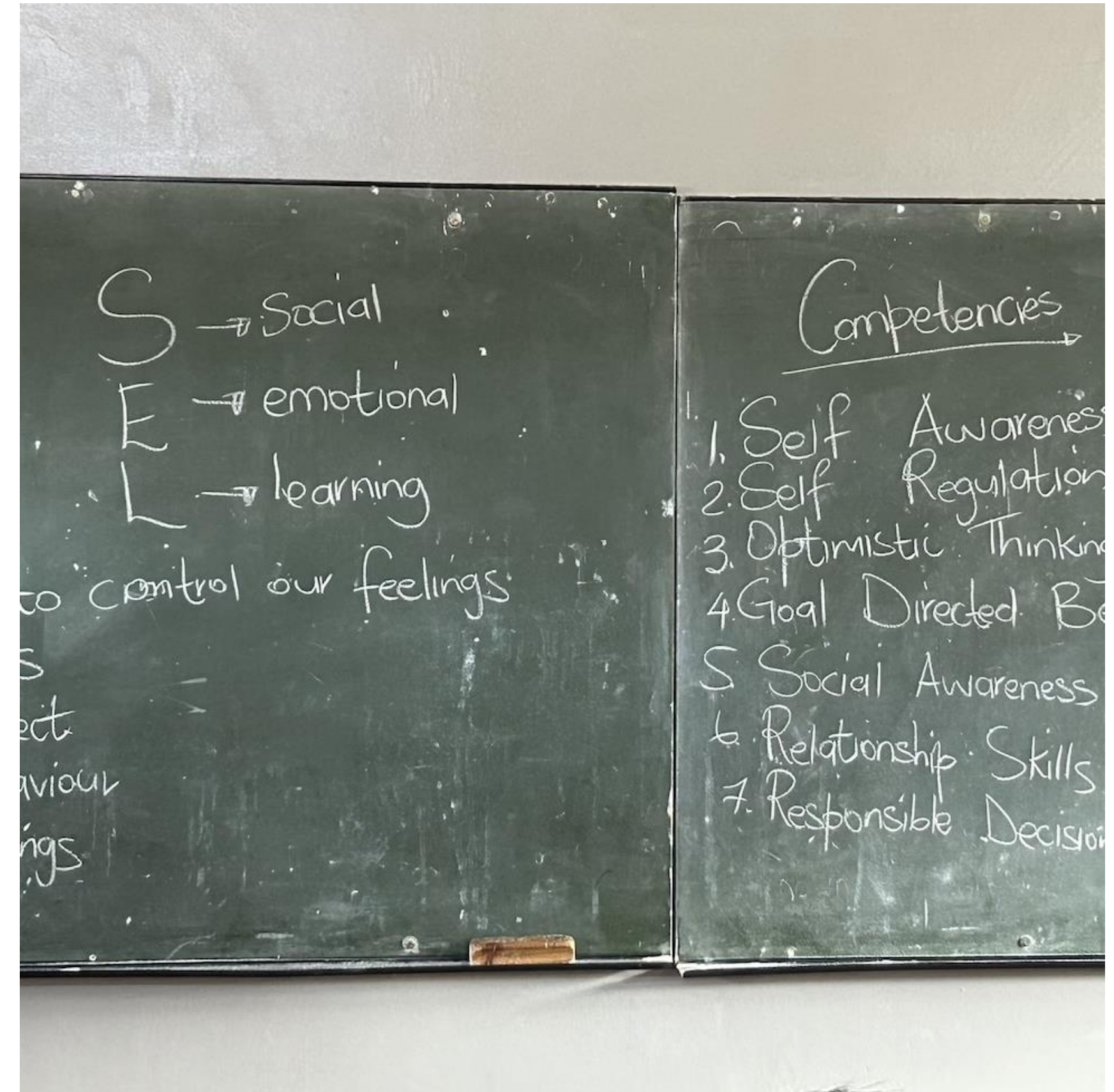
- 9 ECD Centres were supported with donations of stationery, art supplies and educational toys.

SPECIAL NEEDS – NEW PROJECT

Children with disabilities or special needs in our communities have been completely neglected and their families and caregivers unsupported.

With the right therapies and interventions, children with special needs can reach their fullest potential and grow into adults with skills that contribute to their families and communities.

Our Special Needs Education project was launched with the immediate goal to create greater awareness and educate our communities at large about the challenges faced by special needs children and their families so that we might show greater love, care and support to these children, families and caregivers.



Reflections on SEL

Olwethu Sizani (Coach Oza)

"Before joining the Kariega Foundation I was keeping myself busy at home doing hair and looking for more work opportunities. I had applied for the Kariega Foundation APU internship and after completing the physical test I was contacted by Noma (Kariega Foundation Community Manager) who told me the Foundation had a vacancy for a netball coach. This was very exciting to me as netball is my favourite sport!

Soon after I was working as a netball coach and YDP (Youth Development Practitioner) and I completed my Social and Emotional Learning (SEL) training. SEL is an amazing programme. It has changed my life. I am now aware of my emotions and have all the skills to manage my feelings and work towards achieving goals. It has improved the quality of my relationships, and I have a deeper respect for other people who are different to me. I also understand my responsibility within my community and the contribution I can make.

But the most interesting part is teaching SEL to our kids. I love seeing how they change through their ability to express emotion and show empathy for others. Observing them using tools to stay calm is so heartwarming and this skill really helps in setting and achieving goals. Our kids show respect and acceptance for one another; they communicate well and aren't afraid to ask for help. They are learning and trying to make responsible decisions and approach life with a growth mindset. These are all new skills that are growing our youth and changing our communities for the better."



Reflections on SEL

Phumla Ngangqu (Coach Phumla)

"For 10 years I was in an abusive marriage, physically and emotionally. Financially it was bad too. I started working for the Kariega Foundation in 2019 and in 2020 Mama Lindy introduced me to SEL and I started dealing with my emotions. I went through all the SEL competencies, using the best tool of being self-aware of my emotions. In my situation I had to practice the pause and keep my journal, because I was taking my frustration out on my kids. I had no relationship with my kids back then. SEL helped me build myself and the people around me. I have a very good relationship with my kids now because we communicate clearly, and we use SEL in our household. It is amazing.

As a coach it has helped me be calm and regulate all the time because I am dealing with kids who have so many burdens. I must practice empathy and help them be positive about life and make responsible decisions that will make them happy. This is not easy in our communities with all the drugs, alcohol, and abuse. Last year four of my netball players passed matric despite their family problems. I met them when they were ten years old. SEL has changed so many kids' mind-sets in our sports programme and at school, where the teachers are starting to show an interest too. It is working!"



Community

Youth Development

SPORT

- 310 registered players played in the Ubuntu Cup Sport League.
- This league encourages participation and the value of ubuntu.
- Ubuntu Cup sporting codes were soccer and netball.
- Players also participated in tennis, rugby and mini-cricket.

INFORMATION TECHNOLOGY

- Ekuphumleni Library was renovated to include two computer rooms housing a total of 16 laptops.
- An IT Facilitator and Technician was employed to run the computer hub and IT programme.
- Library membership has significantly increased.
- Average use has been more than 100 learners per month.
- To fast track the learning process, the Kariega Foundation capacitated our Youth Development Practitioners with Chromebook laptops and access to ongoing IT training.

ENVIRONMENTAL EDUCATION

- 61 youths engaged in permaculture gardening across 9 working gardens with healthy harvests.
- Tools were purchased and supplied to all gardens.
- Over 100 children participated in the Rhino Run 2023.
- 30 youths participated in rhino dehorning procedures.
- Our youth led a community clean-up in Ekuphumleni and a beach clean-up with the theme of 'effect of pollution on our fish'.
- Arbor Day was celebrated by planting trees in three separate community locations.
- Youth participated in a water-awareness programme to increase water safety on rivers and beaches in our area.



Reflections on Sport

Khaya Ngangqu – Youth Development Manager

"The foundation of everything is very important. For a long time, the sporting world has built the foundation of junior sport on competition and winning. This has limited the development of the player.

The Kariega Foundation Ubuntu Cup is a sports league focused on participation, skills development and playing with the values of ubuntu.

For the past 10 years, we have not had a junior sports league in this area. In just three years we have trained coaches in skills development and the Coolplay Way to develop players of skill and character.

This year we registered over 300 players from 2 communities. Our dream is to keep growing and bring this junior league to more communities.

We are at the very beginning of the potential impact of organised, junior sport. From here we can move to talent identification and pathways to professional sport. We have one young soccer player who has been signed to a professional team. He is a real inspiration to the other players."



Reflections on IT

Khaya Ngangqu – Youth Development Manager

"In the time before we had the computer hub at Ekuphumleni Library, a group of boys came to my house to use my computer because they had a school assignment. I had to go out to a meeting and so I left them with my laptop. When I came back an hour later, they were watching TV. I asked them to show me what they had done. I was shocked when they told me they had made no progress because they had not been able to turn on the laptop.

Now, with the computer hubs we have moved to a situation where these same boys and their peers have access to computers every day. They are learning all the basic computer skills they need to complete their homework and thrive in the working world. Everyone in the community who wants to learn about computers can now do so. There is a real interest.

Our grade 12 learners are now able to apply to Universities and research bursary options.

The computers are helping community members and learners bridge a gap and access opportunities that previously felt impossible."



Community

Skills Development

Through the holistic investment in our youth, we have an emerging generation of self-motivated youngsters hungry for opportunities. An increase in diverse skills development and learnership opportunities is one of our key focus areas. This is what we achieved in 2023:

ALIEN PLANT CONTROL TRAINING

- 5 community youth trained and employed.

FIELD RANGER APU TRAINING

- 12 candidates selected to complete the six-week intensive GCF, Field Ranger Training course.
- 5 graduates received internships with Kariega Game Reserve, APU.

FGASA FIELD GUIDE SCHOOL

- 6 community candidates were awarded full bursaries to the Kariega Foundation, FGASA School for 2024.

SEL YOUTH DEVELOPMENT PRACTITIONER TRAINING

- 12 candidates were selected for the regional SEL Youth Development Training Programme to commence in 2024.

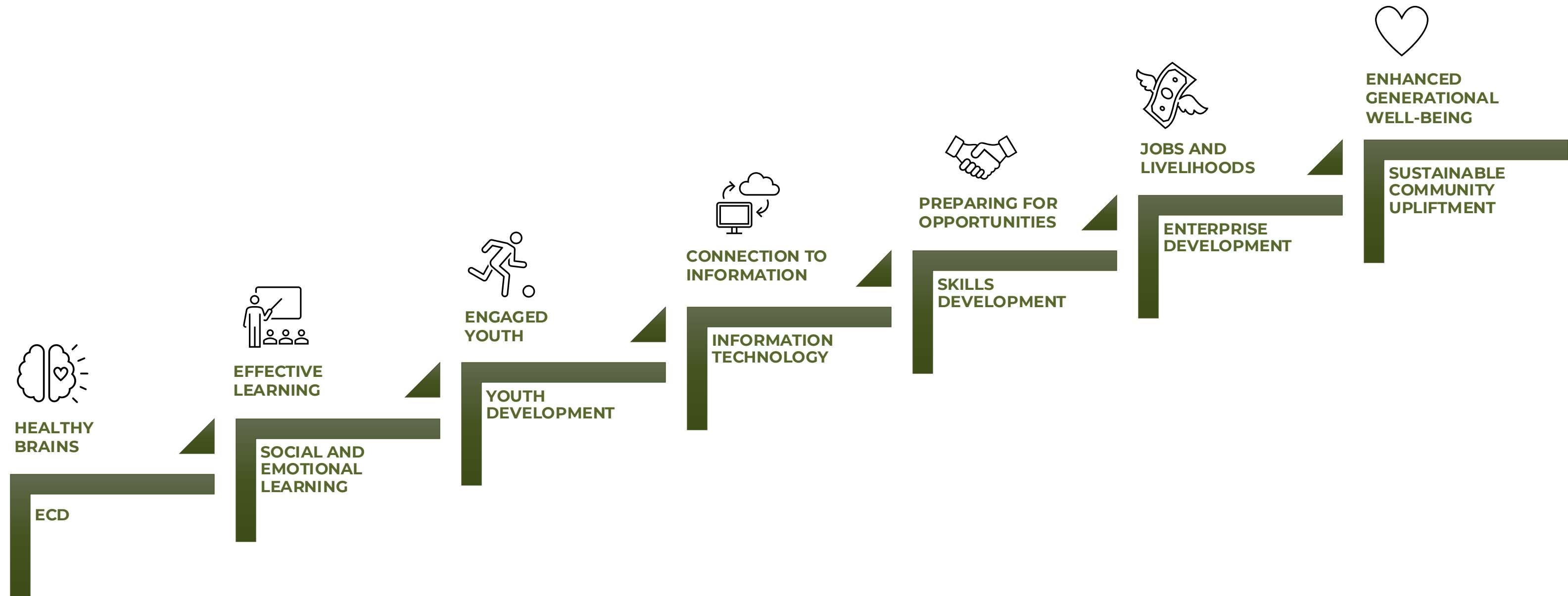
LEGACY BURSARY

- 1 candidate was selected to complete his PGCE (Post Graduate Certificate in Education) at Rhodes University commencing in February 2024.



Theory of Change

Sustainable Community Upliftment



Community

Welfare

We receive significant donations year round from guests who chose to 'Pack for a Purpose' and many local individuals and organisations that support the work of the Kariega Foundation.

Donated items include stationary; educational games, books, and puzzles; soft toys; babies' clothes and nappies; sports equipment and kit; school shoes and uniforms and sometimes furniture, household goods and linen.

Our Community Manager, Nomawethu takes great care in the distribution of these goods and liaises with local clinics, schools, orphanages and churches to ensure they are distributed fairly and where there is greatest need.

These were the highlights this year in addressing the welfare needs of our communities:

- Over 200 families in need (800 people) received welfare donations.
- An entire collection of library books was donated by the Diocesan School for Girls.
- Six Domestic Animal Outreach events reached 500 animals that received tick and flea treatment, rabies vaccinations and were dewormed
- 52 dogs were sterilised in a two-day sterilisation drive.
- 24 community members attended SOIL training. These individuals have now started their own backyard gardens which we will continue to support with compost, seedlings, and general advice.
- We assisted five community gardens with fence repairs.





KARIEGA
FOUNDATION
CONSERVATION THROUGH COMMUNITY

Financials



Income Statement : 28 February 2024

	Feb 2024	Feb 2023
Revenue		
Sales	629 897	594 074
Donations received	8 745 878	6 483 419
	<u>9 375 775</u>	<u>7 077 493</u>
Operating Expenses		
Administration	1 130 541	907 125
Conservation and animal welfare	6 361 312	4 348 488
Community development, education and welfare	1 678 074	526 190
Conservation Centre	1 552 796	1 229 264
	<u>10 722 723</u>	<u>7 011 067</u>
Net (deficit) surplus for the year	<u>(1 346 948)</u>	<u>66 426</u>

Note:

The budget deficit recorded in 2023/24 financial year and was largely as a result of habitat expansion costs, budgeted for in 2022/23, that were carried into and actualised in this financial year. These amounted to over R1 million.

Balance Sheet : 28 February 2024

	Feb 2024	Feb 2023
Assets		
Current Assets		
Trade and other receivables	263 872	464 102
Bank balances	2 123 412	1 991 664
Total Assets	2 387 284	2 455 766
Equity and Liabilities		
Equity		
Trust Capital	1 000	1 000
Accumulated Deficit	(32 319)	1 314 269
	(31 319)	1 315 269
Liabilities		
Current Liabilities		
Trade Creditors	2 418 603	1 140 137
Total Equity and Liability	2 387 284	2 455 766

Note:

Current liabilities include revenue for fundraising events hosted annually in May. 70% is paid out for accommodation and services associated with the event, and 30% is brought into donation income after the event.

Auditors Comment

The Kariega Foundation Trust annual financial statements for the year ending February 2024 were audited by independent auditors, PKF. PWC has been appointed as the Kariega Foundation auditors for the financial year ending February 2025.



Independent Auditor's Report

To the trustees of Kariega Foundation Trust

Qualified Opinion

We have audited the financial statements of Kariega Foundation Trust, set out on pages 5 to 12, which comprise the statement of financial position as at 29 February 2024 and the statement of comprehensive income and statement of changes in equity for the year then ended, and notes to the financial statements, including a summary of significant accounting policies.

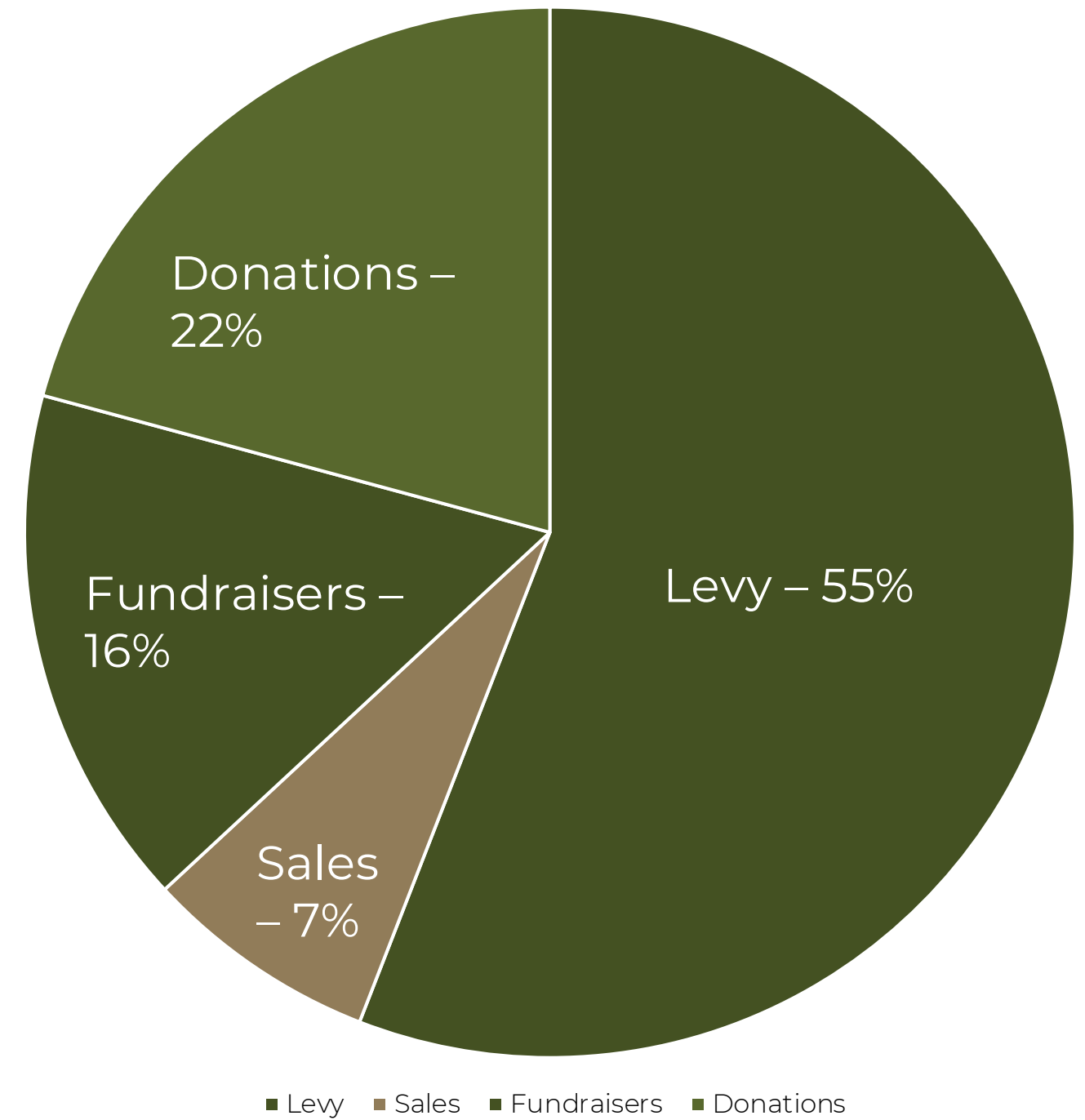
In our opinion, except for the possible effect of the matter described in the Basis for qualified opinion section of our report, the financial statements of Kariega Foundation Trust for the year ended 29 February 2024 are prepared, in all material respects, in accordance with the basis of accounting described in note 1 to the financial statements.

Basis for Qualified Opinion

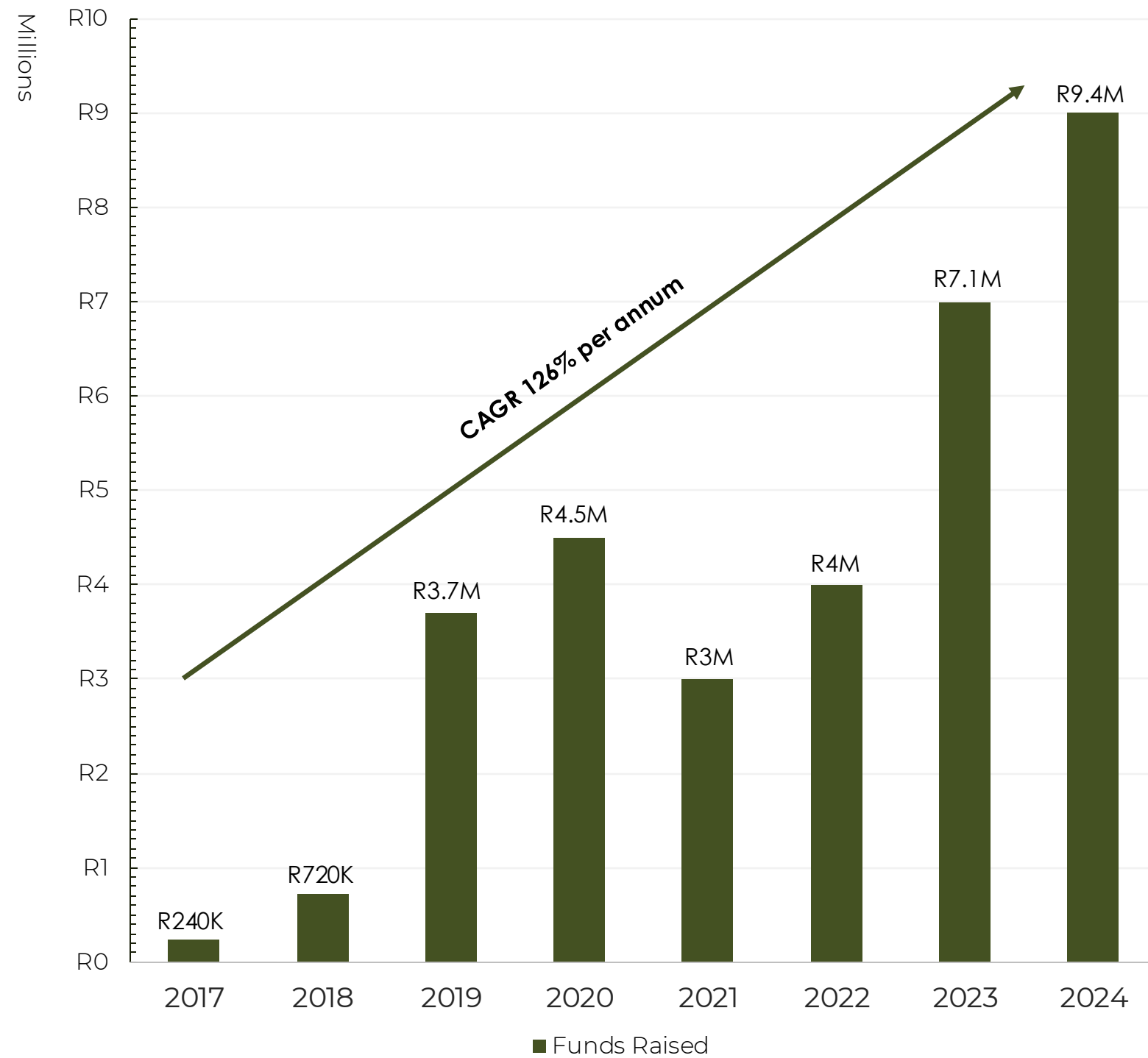
Donations are a significant source of fundraising revenue for Kariega Foundation Trust. The trustees have determined that it is impracticable to establish internal controls over the collection of donations prior to the initial entry in the accounting records. We were therefore unable to confirm whether all donations were recorded.

We conducted our audit in accordance with International Standards on Auditing (ISAs). Our responsibilities under those standards are further described in the Auditor's responsibilities for the audit of the financial statements section of our report. We are independent of the trust in accordance with the Independent Regulatory Board for Auditors' Code of Professional Conduct for Registered Auditors (IRBA Code) and other independence requirements applicable to performing audits of financial statements in South Africa. We have fulfilled our other ethical responsibilities in accordance with the IRBA Code and in accordance with other ethical requirements applicable to performing audits in South Africa. The IRBA Code is consistent with the corresponding sections of the International Ethics Standards Board for Accountants' International Code of Ethics for Professional Accountants (including International Independence Standards). We believe that the audit evidence we have obtained is sufficient and appropriate to provide a basis for our qualified opinion.

Breakdown of Income



Note: Sales reflects groups staying at the Kariega Foundation Centre



Fundraising History

The Kariega Foundation Trust has enjoyed an upward fundraising trajectory over the past 8 years; from R240 000 in 2017 to over R9 400 000 in 2024, reflecting a Compound Annual Growth Rate (CAGR) of 126% per annum.

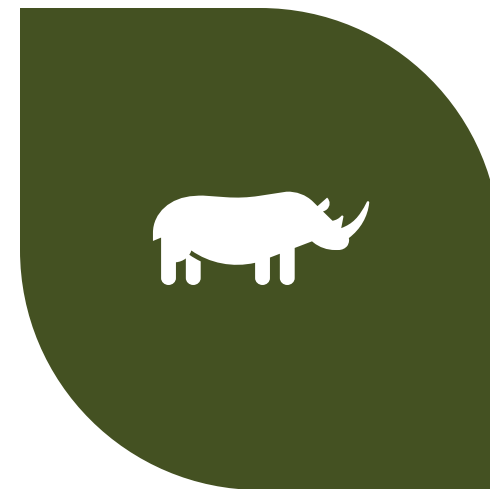
Contributing factors include:

- Focus on governance and onboarding of independent Trustees
- Diversification of fundraising methods
- Relationship development with existing donors
- Relationship development with new donors
- Track record of tangible impact
- Good reporting structures

Pillars of Fundraising

Kariega Game Reserve

Conservation and community levy donation.



Volunteer Programme

Non-profit volunteer programme to support conservation and community projects.

Fundraising

Bespoke Safari Experiences - Give To Get.

Fundraising Events.

Project crowd funding.



Partnerships and Philanthropy

Collaboration with individuals, non-profit organisations and Corporates.



SCAN & DONATE NOW

Donations At Work

Conserve Biodiversity

R 200 / \$ 10
1 hectare / month

R 2000 / \$ 100
10 hectares / month

R 20 000 / \$ 1000
100 hectares / month

Covers all costs associated with wildlife and habitat management restoration and alien plant control

Save The Rhino

R 7500 / \$ 400
per day

R 230 000 / \$ 12 200
per month

R 75 000 / \$ 4000
collaring procedure

Covers all operational cost of APU and advanced technology costs

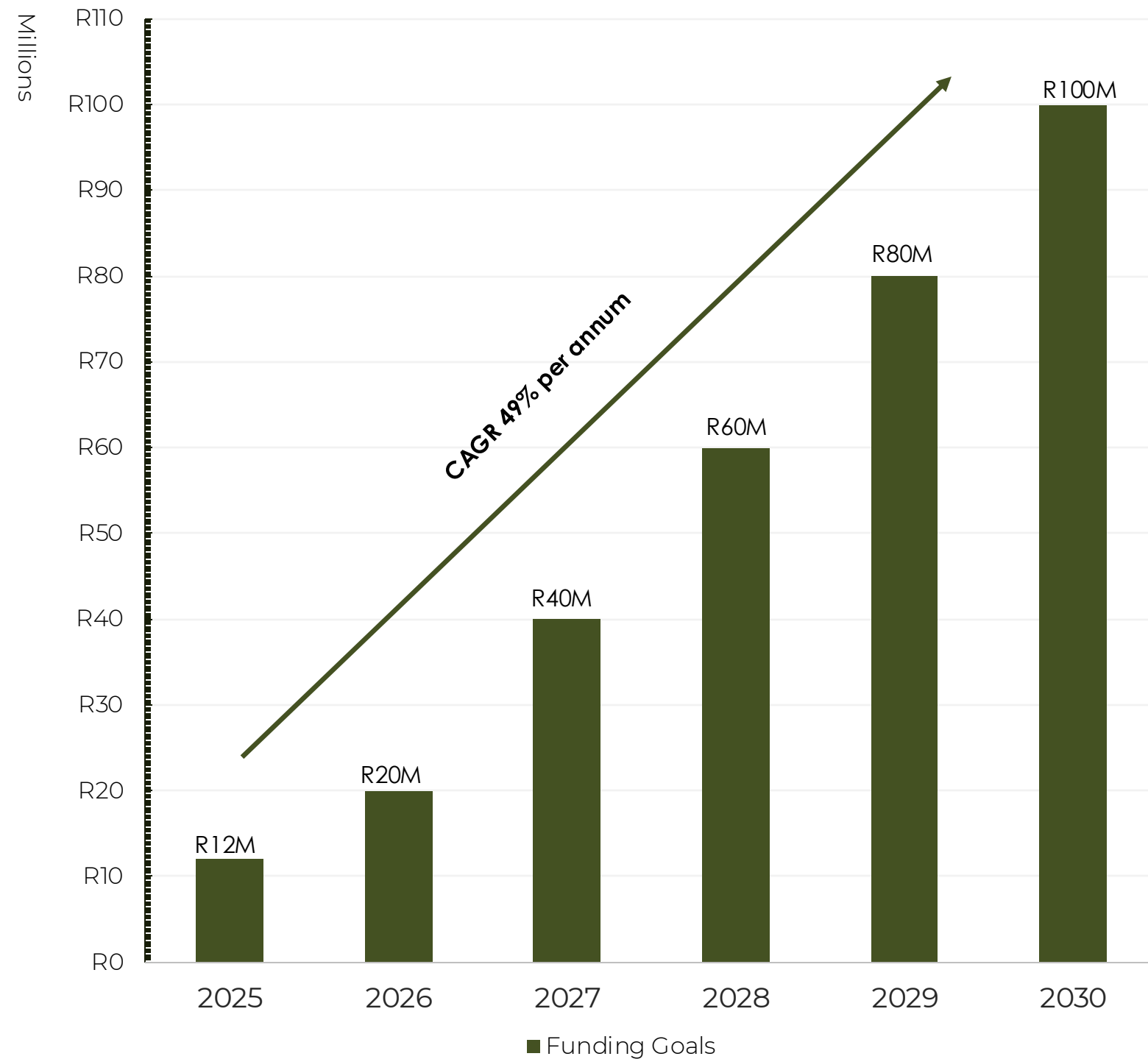
Invest in a Child

R 250 / \$ 15
1 child / month

3000 / \$ 160
1 child / year

Legacy Bursary
R 150 000 / year (\$ 8000)

Covers operational costs of Social Emotional Learning, Ubuntu Cup, environmental education and IT facilitation



Fundraising Goals

This ambitious, 5-year fundraising goal, reflecting a CAGR of 49% per annum, is driven by planned community infrastructure development plans and growth in select projects in collaboration with the community and local municipality.

These include:

1. Development of Ekuphumleni Youth Development Facility including multi-purpose, artificial turf sports field - land has been purchased.
2. Development and initial operational costs of a vocational training School - site has been identified.
3. Building of a second ECD Centre – land allocation is in process.
4. Growth of APU and investment in Advanced Technology.
5. Growth in APC team and investment in equipment.
6. Expansion of SEL training and curriculum to all schools within the Ndlambe Municipal district, in partnership with ECDOE (Eastern Cape Department of Education.)
7. Expanding network of library computer hubs to all libraries within the Ndlambe municipal district.

Key Donors

Our heartfelt thanks to all our wonderful donors and partners.

Your ongoing support enables us to keep growing our conservation and community footprint, uniting a conservation-minded community that is working together to protect, preserve, and benefit our planet, people and wildlife.

We look forward to working with you to grow our impact into 2024 and beyond.

Key Donors and Partners:

These key organisations have donated more than R500 000 annually, or they have partnered with us on a specific project, with the vision for growth and expansion over time.



Habitat Expansion
Youth Devl.



ECD
APU Field Ranger
Training



Habitat Exoansion
APU Field Ranger
Training



Leopard
Conservation
Cheetah
Conservation



www.rsteenlaw.com
Special Needs
Education



NDLAMBE MUNICIPALITY

Community
Infrastructure
Development



Advanced Technolgy
Management Systems



Habitat Expansion
APU Training and
equipment
APU Field Ranger Training



Advanced Technology and
surveilance resource and
equipment



Computer hubs and IT
literacy



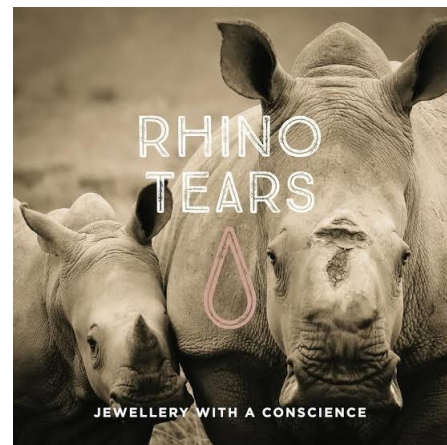
Admin, marketing and staff
costs across all projects. APU
operational costs.



Advanced Technolgy
Management Systems



Additional Donors



Every individual who has give us their time and energy – we appreciate you.
Every donation no matter how small makes a difference.
Little bits make a lot! Thank you.

Thank you, Kariega Game Reserve

Guests visiting Kariega Game Reserve are our primary donors and partners in conservation through community.

Each guest contributes a conservation and community levy donation. These donations are our most sustainable source of funding and cover our core administrative and operational costs.

In addition, Kariega Game Reserve owners, Directors and Management are incredibly supportive in frequently hosting our donors and partners, and in all our on-site fundraising efforts as well as welcoming our community youth onto the reserve for numerous environmental education activities.

This generosity amplifies our fundraising ability and the impact of conservation and community projects.

The Kariega Foundation team and board of trustees would like to thank the Kariega staff and all guests, past, present and future.



Stay Connected

Stay up to date with our news and stories by following us on social media.



Kariega Foundation



@kariega_foundation

Get Involved

Connect with our CEO, Lindy Sutherland. Let's start a conversation.



+27 832787289



lindy@kariegafoundation.co.za



It's surely our responsibility to do everything within our power to create a planet that provides a home not just for us, but for all life on Earth.

If working apart we're a force powerful enough to destabilise our planet, surely working together we are powerful enough to save it.

Sir David Attenborough

Scan and donate now.





KARIEGA
FOUNDATION
COMMUNITY & CONSERVATION